

Explore the Park



Follow the interpretive signs to visit many of the park's special features.

- | | |
|---------------------------|--|
| 1 Park History | 10 Hand Made Dyke |
| 2 Mission Creek | 11 Homestead Site |
| 3 Spawning Channel | 12 Spring |
| 4 Pond | 13 Scout Site and Swinging Bridge |
| 5 Pond | 14 Bird Watching |
| 6 Pond | 15 Old Fish Ladder |
| 7 Ponderosa Pine | 16 New Dyke System |
| 8 Meadow | |
| 9 Rare Wildflowers | |

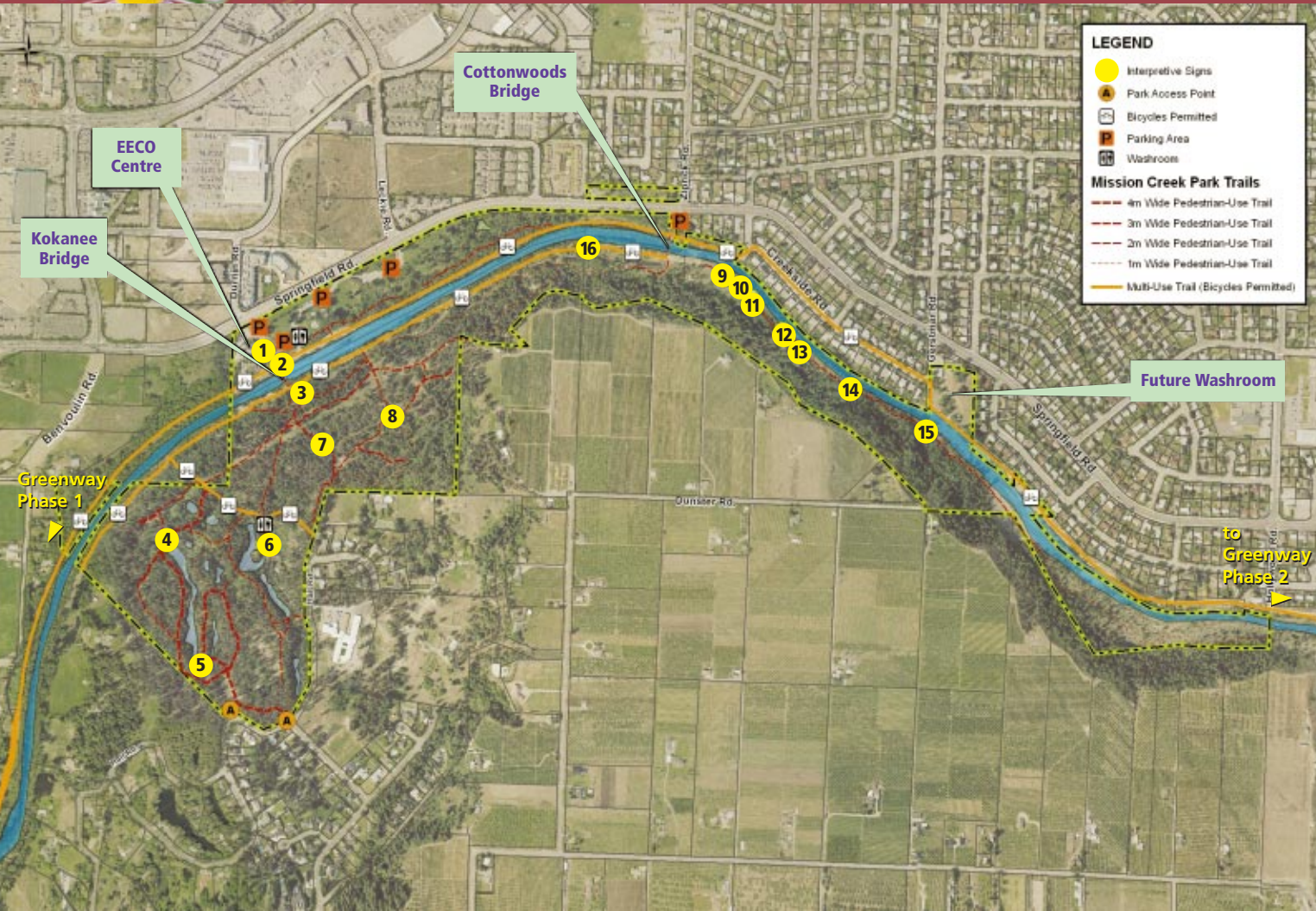
Find your way...



INSIDE: TRAIL MAP • EECO CENTRE • PARK PROGRAMS •

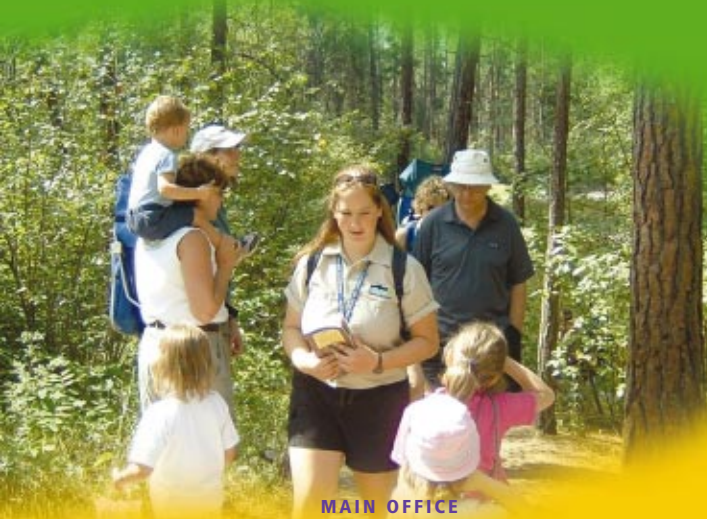
• DISCOVER WHAT LIVES HERE • PARK FEATURES •

Mission Creek Regional Park



Follow Park Regulations:

- Dogs must be kept on a leash within park boundaries and owners should clean up after their pets.
- Bikes are permitted only on the service road from Hall Road to the dyke, and along the dyke.
- Help protect park vegetation by using only designated trails and not picking the flowers.
- Special events and large groups need a permit. Please book through the parks department by phoning 469-6232.



MAIN OFFICE
 1450 KLO Road, Kelowna, BC, V1W 3Z4
 Phone (250) 469-6232 • E-mail parks@cord.bc.ca

EECO CENTRE
 2363A Springfield Road, Kelowna, BC, V1X 7N7
 Phone (250) 469-6140 • E-mail eeco@cord.bc.ca
 Visit our website at www.regionaldistrict.com



Regional District of Central Okanagan
 Regional Parks and Recreation



What you'll see

Mission Creek Regional Park... is a 92 hectare (230) acre parcel of nature reserve located in the centre of Kelowna. The park lies within the Ponderosa Pine Biogeoclimactic Zone and borders both sides of Mission Creek for approximately 3 km. The numerous park features and natural setting offer an attraction for visitors of all ages.



Park features:

Hiking: The park contains over 12 km of hiking trails including a self guiding interpretation trail. (See reverse side)

Ponds: The Pond Loop trail provides an opportunity to see most of the nine ponds in the south end of the park. Enjoy the various duck species, numerous turtles and riparian plants which make up the pond ecosystem.



Spawning Channel: In September and October, the 1 km channel comes alive with Kokanee salmon on their annual spawning run. Although you may not see them, the eggs and young kokanee remain in the channel throughout the year. Please respect their habitat.



Playground and Picnic Area:

The park provides a playground and field area with picnic tables and a picnic shelter. You will find it ideal for day picnics with children, family or friends.

Learn a little

Interpretation Programs: Park interpreters offer a variety of programs throughout the year in Mission Creek and other Regional Parks. Programs including Kokanee spawning, pond studies and nature walks are available by donation to school and community groups. Call 469-6140 to book.



EEO Centre: The Environmental Education Centre for the Okanagan has activities for kids, environmental exhibits, park and trail information, an environmental resource library and more. Open daily.

Composting Education and Xeriscape Gardens:

Learn how to compost and have drought tolerant plants in your own backyard. The gardens are self touring but workshops are available.



Discover what lives here

Use these check lists to see how many you can find!



Park vegetation

The observer with a keen eye can see over 80 species of flowering plants in the park annually. Some common species that can be viewed are:

Spring

- Oregon Grape
- Saskatoon
- Balsam Root
- Soopallalie
- Choke Cherry
- Pussytoes
- Pinedrops
- Fringe Cup
- Mariposa Lilly
- Black Hawthorn
- Wild Rose
- Brown-Eyed Susan
- Salsify, Lupine
- Mock Orange
- Fleabane
- Yarrow
- Blue Leafed Strawberry



Summer

- Fleabane
- Clematis
- Coral Root
- Fireweed
- Sweet Clover
- Nightshade
- Snowberry
- Brown-Eyed Susan
- Bittersweet Nightshade
- Thistle
- Goldenrod
- Yellow Buttercup
- Burdock, Dogbane

Trees

- Ponderosa Pine
- Willow
- Douglas Maple
- Birch
- Alder
- Choke Cherry
- Black Cottonwood
- Black Hawthorn
- Trembling Aspen
- Douglas Fir



Park wildlife

The park is home to 130 bird species and a large collection of other animals. Staying quiet through the trails will increase your chances of glimpsing the wildlife.

Birds

- Mallard Duck
- California Quail
- Ring-Necked Pheasant
- Great Blue Heron
- Common Raven
- Brewers Blackbird
- Hairy Woodpecker
- Killdeer
- Great Horned Owl
- House Finch
- Song Sparrow
- Cooper's Hawk
- Stellar's Jay
- American Crow
- Winter Wren
- Starling
- Canada Goose
- Mourning Dove
- American Robin

Other Animals

- Deer Mouse
- Yellowpine Chipmunk
- Yellow Bellied Marmot
- Bat Species
- Mink
- Gopher Snake
- Bear
- Red Squirrel
- Mule Deer
- Beaver
- Marten
- Coyote
- Garter Snake
- Frog Species

